

Freeway Worship Leader Hand Signal Guide (March 2020)
(To guide Presenter operators through song slides)



From the Top / Start
(Verse 1)

Bridge
(3 Fingers)



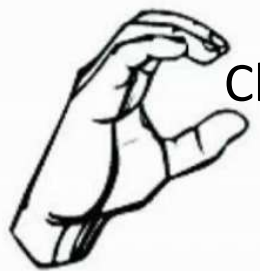
Tag Line
(at end of Song)
Fingers slightly apart

Pre Chorus
(if applicable)



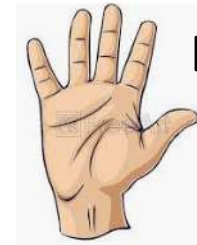
Instrumental
(Fingers wiggling)

Stop Instruments



Chorus

Repeat / Keeping going



End of Song